

# SUPPLEMENTARY INFORMATION

## To THE WSA WATER SUPPLY CODE OF AUSTRALIA WSA 03:2011-3.1 MRWA Edition Version 2.0 and MRWA Standards

## List of Figures

Figure 1 GWW Central (CWW) and Western Region (WW) .....	4
Figure 2: Service area (in purple) previously used Clockwise Closing Valves.....	7
Figure 3: ACC Valve Cover Marking.....	8

## Contents

<b>INTRODUCTION.....</b>	<b>3</b>
<b>Purpose .....</b>	<b>3</b>
<b>Disclaimer.....</b>	<b>3</b>
<b>Scope.....</b>	<b>4</b>
<b>Supplementary Requirements to MRWA Standards.....</b>	<b>5</b>
<b>DOCUMENT INFORMATION .....</b>	<b>9</b>
<b>REVIEW PROCESS.....</b>	<b>9</b>
<b>VERSION TABLE.....</b>	<b>9</b>

# INTRODUCTION

## Purpose

The design and construction of water (drinking water and Class A non-drinking water) assets within Greater Western Water's (GWW) service area shall be carried out in accordance with the following documents (listed in the order of precedence):

1. This design supplement.
2. MRWA News Bulletins (available at: [www.mrwa.com.au/news-page](http://www.mrwa.com.au/news-page)).
3. MRWA Water Standards (available at: [www.mrwa.com.au/standards](http://www.mrwa.com.au/standards)).
4. GWW Approved Product Listing (available at: [www.mrwa.com.au/productSearch](http://www.mrwa.com.au/productSearch)).
5. MRWA Edition of the WSAA Water Supply Code of Australia WSA 03-2011-3.1 Version 2.

## Disclaimer

The standards and supplement information are not prescriptive standards. The responsibility for design is the with designer who is required to comply with the Victorian Registered Engineers Act.

## Scope

Greater Western Water (GWW) was formed on the 1st July 2021 after merging City West Water (Footscray Office or Central Region) and Western Water (Sunbury Office or Western Region). These regions are shown in Figure 1.



Figure 1 GWW Central (CWW) and Western Region (WW)

This supplementary information document is an update to version 1.0 of the same document published by Western Water in 2018. All GWW Accredited Consultants, Contractors and approved suppliers shall refer to the current version of this document (V2) as **version 1.0 is no longer applicable within GWW region**.

The intent of the updated supplement is to provide a unified approach to standards across the GWW region, removing any differences between the Central and Western regions and any deviations from the MRWA standard. Any deviations that were applicable to the Western region that are not specified below are no longer applicable.

## Supplementary Requirements to MRWA Standards

Accredited consultants and contractors shall adhere to all the above referenced documents (listed on Page 3) in their order of preference except for the following two items:

Item#	Subject	Previous Water Supplement (Version 1) – Western region only - No longer applicable	Version 2, applicable to the entire GWW service area
1	Pretap connectors for providing property services	Pretap connectors not allowed in Western region.	<p><b>Pretap connectors are allowed to be used across the entire GWW service area. These shall only be Ductile Iron pretap connectors with one (1) or two (2) ports.</b></p> <p>DI Pretap connectors with more than two (2) ports (e.g. 4 ports) shall not be used and GRN (Glass Reinforced Nylon) pretap connectors shall also not be used.</p>
2	Closing direction of valves	<p>Clockwise closing valves are used in Melton, Eynesbury, Toolern Vale and the most part of Rockbank, up to the OMR (Outer Metropolitan Ring Road)</p> <p>All other areas use anti- clockwise Closing valves.</p>	<p><b>All new water valve installations shall be anti-clockwise closing. GWW is adopting the installation of anti-clockwise closing (ACC) valves across the entire GWW service area in accordance with MRWA Water Code requirements.</b></p> <p>When installing ACC valves in the areas that already include clockwise closing valves (highlighted in Figure 2 below), the consultants and contractors shall clearly specify on the design and the as-constructed drawings the closing direction of the new valves (i.e. ACC valves) and obtain GWW written approval prior to the installation of the valves in these areas. GWW also requires the covers of these new ACC valves are physically marked on both sides (front and back) as shown in Figure 3 below to indicate the anti-clockwise closing direction in the area where clockwise closing valves have been predominantly used historically. <b>The</b></p>

Item#	Subject	Previous Water Supplement (Version 1) – Western region only - No longer applicable	Version 2, applicable to the entire GWW service area
			<p><b>marking "ACC Valve" on the cover shall be casted with the valve cover on both sides (front and back) not as a separate addition.</b></p> <p>These marked covers shall be installed in trafficable and non-trafficable areas (i.e. shall be Class D and Class B). In the event that the above-mentioned covers are not available in the market, the designer/the contractor is required to contact GWW to agree on alternative marking procedures.</p> <p>The installation of ACC marked covers within the Lilac shaded area shown in Figure 2 shall continue until GWW issues a formal instruction in the future advising how the ACC valves should be installed.</p>



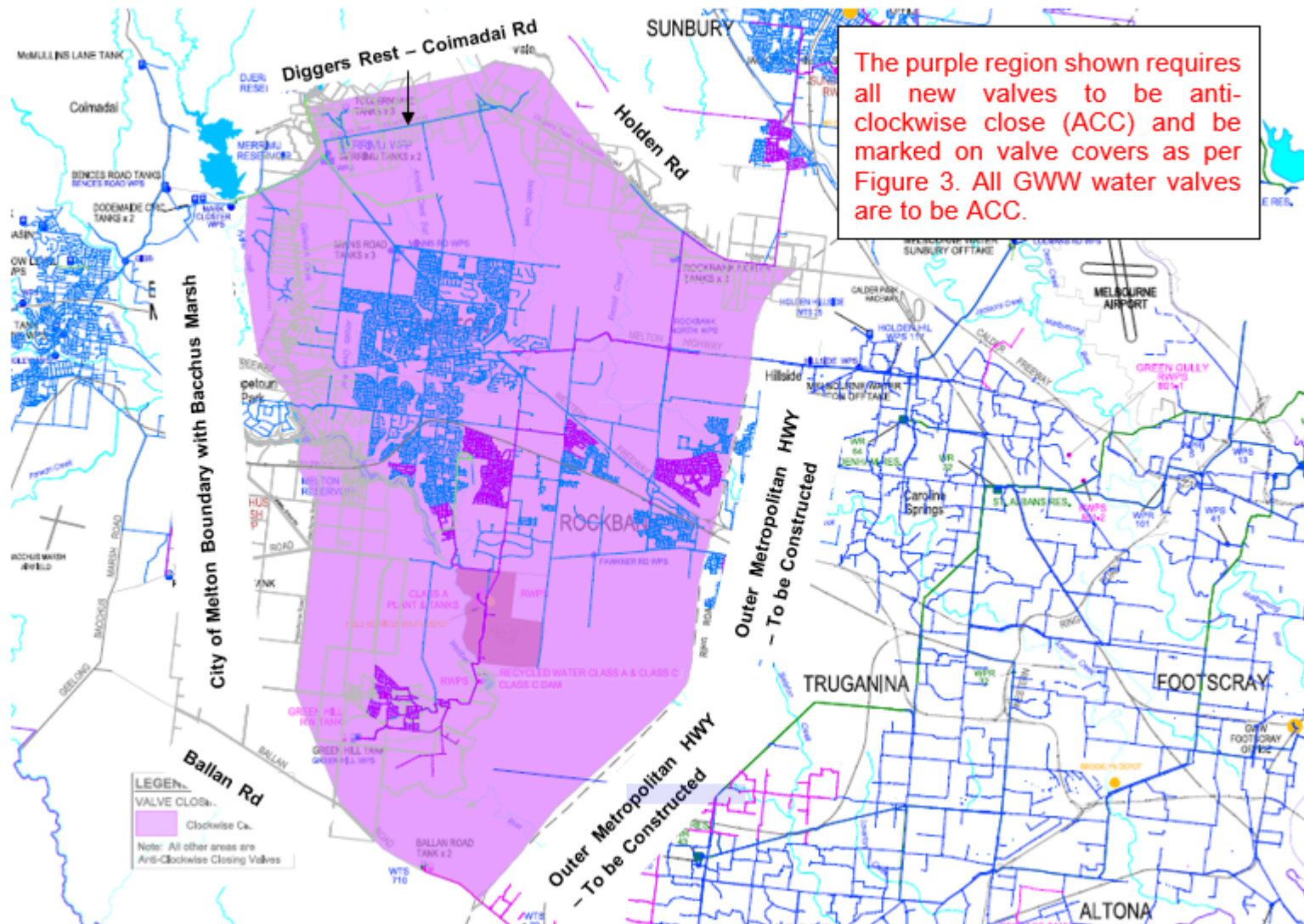
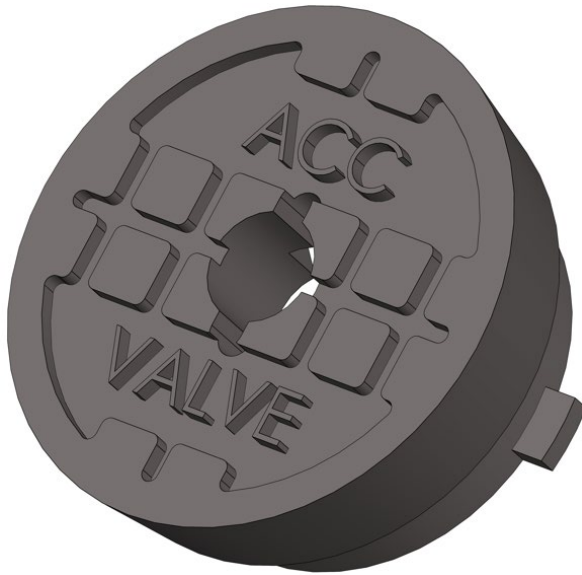
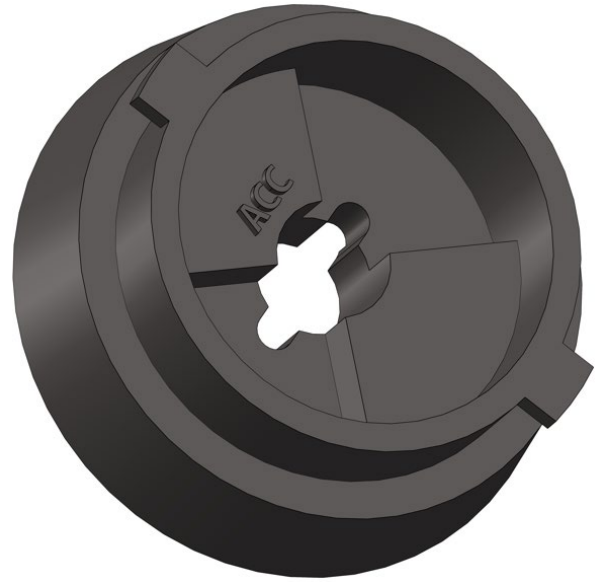


Figure 2: Service area (in purple) previously used Clockwise Closing Valves



Frontside of the cover



Backside of the cover

Figure 3: ACC Valve Cover Marking



## DOCUMENT INFORMATION

The following documented information generated by this procedure will be in accordance with GWW records and documentation processes.

Document/ Record	Location	Security / retention requirements
IGD1007758	Watershed / The Current	Permissions and security are maintained through SharePoint permissions and application settings

## REVIEW PROCESS

The document will be reviewed nominally every three (3) years or earlier if decided by GWW. Revisions are signed off (endorsed) by the Team Leader Infrastructure Quality.

## VERSION TABLE

Version Number	Document Owner's Position Title	Purpose/Change	Date
<i>Vx-0</i>	<i>Insert Document Owner's Position Title</i>	<i>Outline purpose of the change or summary of changes in 1-2 lines. You can also mention section names or numbers that have changed</i>	<i>DD/MM/YYYY</i>
V02	Tarek Kabbani Lead Engineer	Unification of the water supplementary standard across the GWW service area. Superseding the water supplement that was applicable to the western region.	16 September 2024